



**Signet PC XRF**

**Signet PC XRF** Precious metal analyzer uses the high efficiency practical proportional counter detector, by the real price localization, satisfies the precious metal component inspection request.

**Signet PC XRF** Integrated industrial computer, no external computer required. The instrument adopts professional appearance design and real-time monitoring system. In order to ensure the safety of users, automatic radiation protection device is installed. The optional colors of the different elements help to distinguish the elements of interest clearly and easily. After the test, the test report will be displayed automatically.

### • Performance feature

Intelligent precious metal analysis software

Built-in HD camera, convenient for users to observe samples

Single sample room, manual switch cover, safe and convenient operation

Long-acting stabilized X-ray tube

Triple security protected mode

### • Instrument Configuration

Proportional counting detector

Signal detection circuit

High and low voltage power supply module

Integrated industrial computer

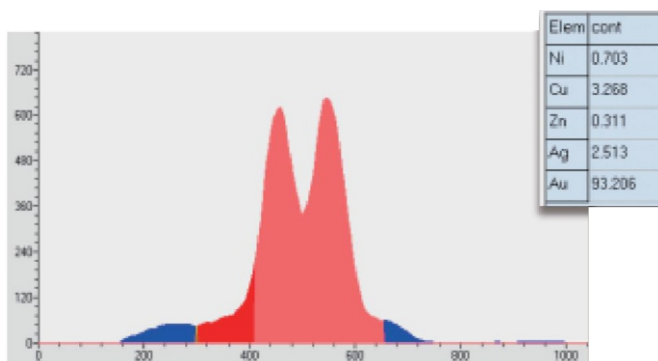
Touch Screen Display



## Technical Parameters

Model	<b>Signet PC</b>
Elemental analysis ranges:	From calcium (Ca) touranium (U)
Detector:	Proportional counter
Measurement objects:	Solid, Powder, Liquid
Measuring Accuracy:	±0.1%
Analysis range:	1% ~ 99.99%
High Voltage power supply:	4-50 KV/0- 1mA
Testable elements :	Gold Silver Copper Zinc Nickel Platinum Cadmium Iridium Rhodium
X-ray source:	Molybdenum target X-ray tube (no radiation)
Test time:	Adjustable from 10 to 60 seconds
Test point diameter:	1~2mm
Environment temperature:	0°C ~ 30°C
Environment humidity:	<70%
Input voltage:	AC 220V± 5V, Recommended to configure AC purification voltage regulator power supply
Sample (Chamber) cavity size:	310mm x 240mm x 90mm
Instrument dimensions (External):	430mm x430mmx 370mm
Instrument Power:	120W
Net Weight:	27kg
Expanded Uncertainty:	<0.36%

## Testing Spectrogram



Gw01, Bharat Diamond Bourse, BKC, Bandra East, Mumbai - 51.  
Contact : + 91-22-23639900 / +91-22-26756575  
Mob. : +91 9821612340 / +91 9004377772  
• Email : [info@semsonint.com](mailto:info@semsonint.com) • Website : [www.semsonint.com](http://www.semsonint.com)